



EU approaches to sustainable forest management, timber trade and conflict minerals

**PECC seminar one, Natural Resources Industry, 21st
September 2017 Bozeman, Montana**

**GIULIANA TORTA
EU Delegation to the US
Washington DC**

Forestry and timber trade

182 mil ha of forests/wooded land (43% of land area),
increasing trend in forest cover

- ◆ EU Forest strategy (2013) and CAP
- ◆ Network of (also) forest protected areas (Natura2000); 1979, 1992
- ◆ FLEGT Action Plan (2003)
- ◆ EU Timber Regulation (2010)
- ◆ 28 National legal frames

Responsible sourcing & global deforestation

- *Deforestation study (2013)*

- *Recent stakeholders workshop (June 2017) and forthcoming studies on Palm oil consumption and deforestation Action Plan*

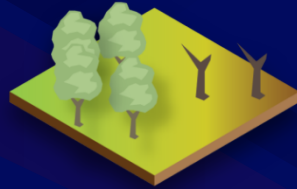
- ❖ **deforestation associated with EU27 (before Croatia accession) final consumption is 10% of worldwide deforestation embodied in commodities and products in 2004 (732.000 ha).**
- ❖ **Consumption of oil crops (e.g. soybeans, palm oil) and derived products, as well as livestock products, had the main impact.**

- ❖ Over the period 1990-2008, the EU27 imported almost 36% of all deforestation embodied in crop and livestock products traded between regions (**9Mha of deforested land**).
- ❖ The **second ranked** region in terms of net import of deforestation was **Eastern Asia (including China and Japan)**, with **4.5 Mha** over the same period. North America imported **1.9 Mha**.

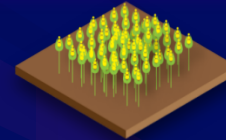
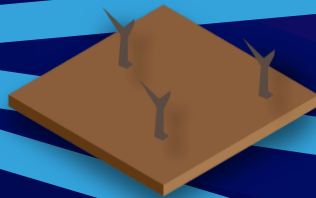
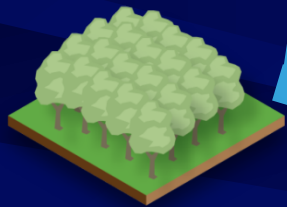
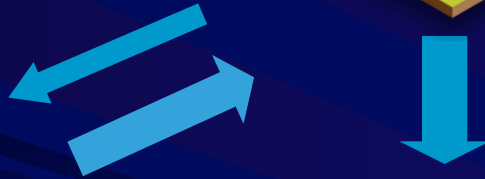
- ❖ The land used by the EU27 for the production of its goods and services represents **only half of the land associated with its consumption**
- ❖ **Mainly agricultural and food products**, but also derived processed products such as furniture and clothing
- ❖ When aggregated per sector, **food consumption dominates the impact on deforestation (60%)**.

What is deforestation

degradation



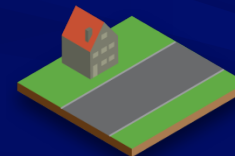
Mining, illegal logging,
unsustainable forest
management, shifting
cultivation, etc.



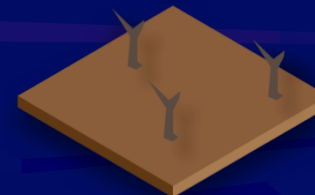
Agricultural
crops
(timber minor)



Pastures /
livestock



Infrastructure
development



natural hazards

DEFORESTATION

due to internal country
consumption/land use
and to **external demand**
(**exports**)

Mining and mining waste

- Directive 2006/21/EC on the management of waste from extractive industries.
- **July 2017:** The European Commission launched an open call for input to support the development of guidance documents in the field of extractive waste management. Input is welcome by the end of September 2017.

- a Best Available Techniques reference document for the management of tailings and waste-rock in mining activities; and
- (hazardous substances/waste) Seveso III Directive which includes in its scope operational tailings disposal facilities, including tailing ponds or dams, containing dangerous substances.

- ◆ Europe has a well established copper mining industry, and a world-class smelting and refining (copper producing) sector
- ◆ Non ferrous manufacturing industry employs 500.000 people, the European copper production industry employs some 50,000 people directly with a much higher indirect contribution by delivering key products into a vast range of business and services

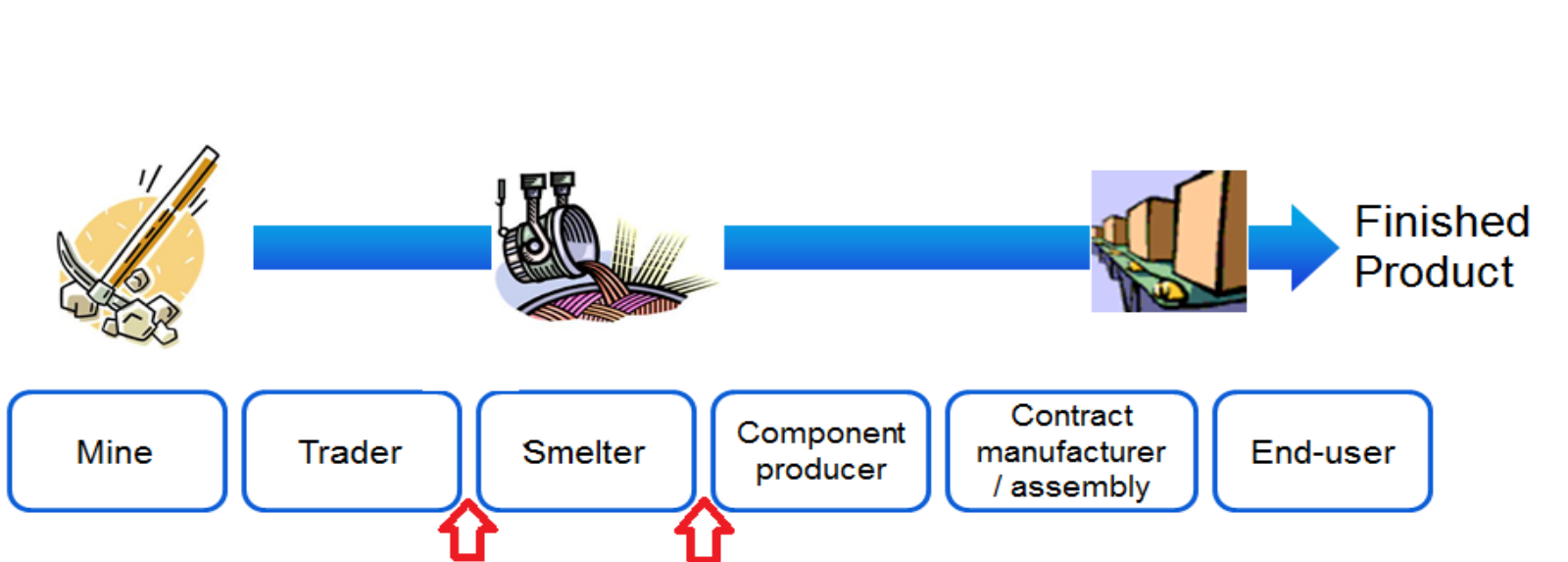
Why a focus on conflict minerals? Part of responsible and sustainable sourcing

- **Natural resources: a driver for development but often linked to conflict and instability**
- **Existing initiatives on responsible sourcing of minerals:**
 - US Dodd-Frank Act Section 1502
 - OECD Due Diligence Guidance
 - International Conference on the GLR (DRC, Rwanda)
 - Numerous public and private initiatives (CFSP, LBMA, RJC, DMCC)

EU Regulation

Regulation entered into force 8 June 2017 and will apply to EU importers as of 1 January 2021

- 1. **Mandatory due diligence** for European Union importers of 3TG minerals and metals where annual import volumes exceed thresholds
- 2. **Global geographical scope:** due diligence irrespective of origin



EU importers

THANK YOU

- http://ec.europa.eu/environment/nature/natura2000/index_en.htm
- <http://ec.europa.eu/trade/policy/in-focus/conflict-minerals-regulation/>
- <http://ec.europa.eu/environment/waste/mining/>
- https://ec.europa.eu/agriculture/forest/strategy_en
- <http://ec.europa.eu/environment/forests/flegt.htm>
- <http://illegallogging-deforestation-conference.eu/>
- http://ec.europa.eu/environment/forests/impact_deforestation.htm