



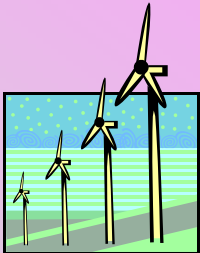
PECC International Project 2007-2009: Issues related to water management in island territories, coastal regions and isolated communities

The Global Water Issues

Mick Saito, Ph.D, P.E.(Env)

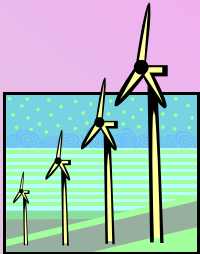
Question to be addressed

- The Global Water Issues: How can multilateral and domestic policies prevent or mitigate the negative impacts of changes in global water cycles on water availability and its quality?



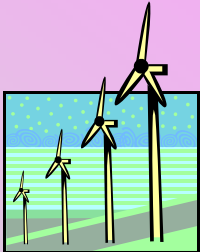
Multilateral Policies

- Agenda 21
- Millennium Development Goals
- Johannesburg Plan of Implementation
- International Decade for Action 2005 – 2015: “Water for Life”
- Asia-Pacific Water Summit: December 2007



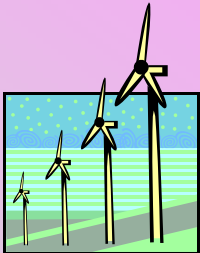
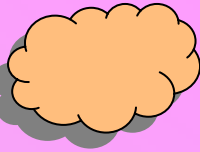
UN-Water

- Inter-agency mechanism for follow-up of the WSSD water-related decisions and the MDGs concerning water
 - Coordinate UN system, inter-agency information exchange, communication and collaboration with civil and private sectors
- Endorsed: 2003
- UN member organizations (24) and non-UN partner organizations



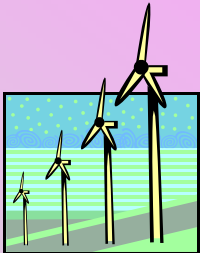
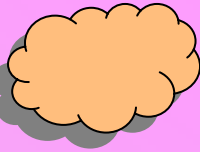
UN Secretary-General's Advisory Board on Water & Sanitation

- Established: 2004
- Adoption of “Hashimoto Action Plan (HAP)”: 2006
 - Water Operators Partnership, Financing, Sanitation, Monitoring, Integrated Water Resource Management, Water & Disaster
- Asian Dialogue: May 2007



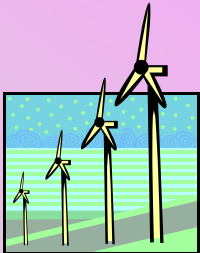
Climate Change (CC) Issues

- Implication to water issues
 - Change rainfall pattern
 - Increase tropical cyclone/typhoon
 - Decrease snowfall, snow melting
 - Sea water intrusion
 - Stagnant drainage, backwater
 - Expand water-related diseases
 - etc.



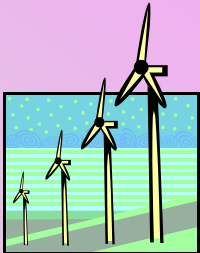
Regulatory Framework

- Intergovernmental Panel on Climate Change (IPCC): 1988
- United Nations Framework Convention on Climate Change (UNFCCC): 1992
- Kyoto Protocol: 1997, effective: 2005
 - Reduction of Green House Gas (GHG) Emission
 - Kyoto Mechanism (Emissions Trading, Clean Development Mechanism, Joint Implementation Mechanism)



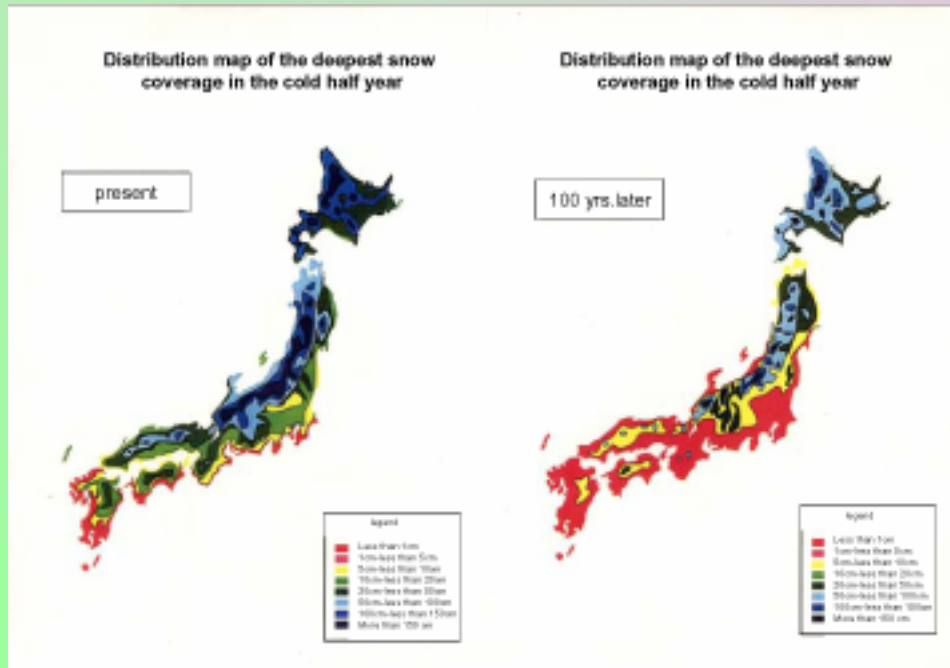
Financial Framework

- Kyoto Mechanism
 - ET, CDM, JI
- Global Environment Facility (GEF)
 - Climate Change, Biodiversity, International Water, Land Degradation, POPs, Ozone Depletion
 - Special Climate Change Fund (SCCF), Adaptation Fund (AF), Least Developed Countries Fund (LDCF), National Adaptation Plan of Action (NAPA)
 - Integrated Water Resource Management (IWRM)

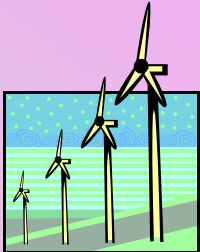


Japanese Context of CC

- Less snowfall -> less water reserve
- More rainfall -> higher flush flood risk

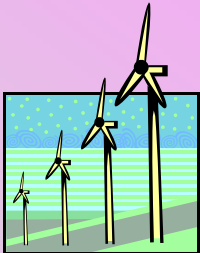


Source: K. Takemura:
Climate change and
water cycle
management in Japan



Infrastructural Development

- Bank raising of existing dams
- Reclaimed water supply
- Rainwater harvesting

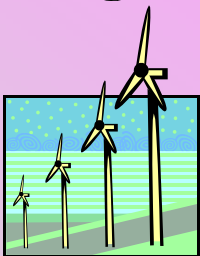


Innovative Approach

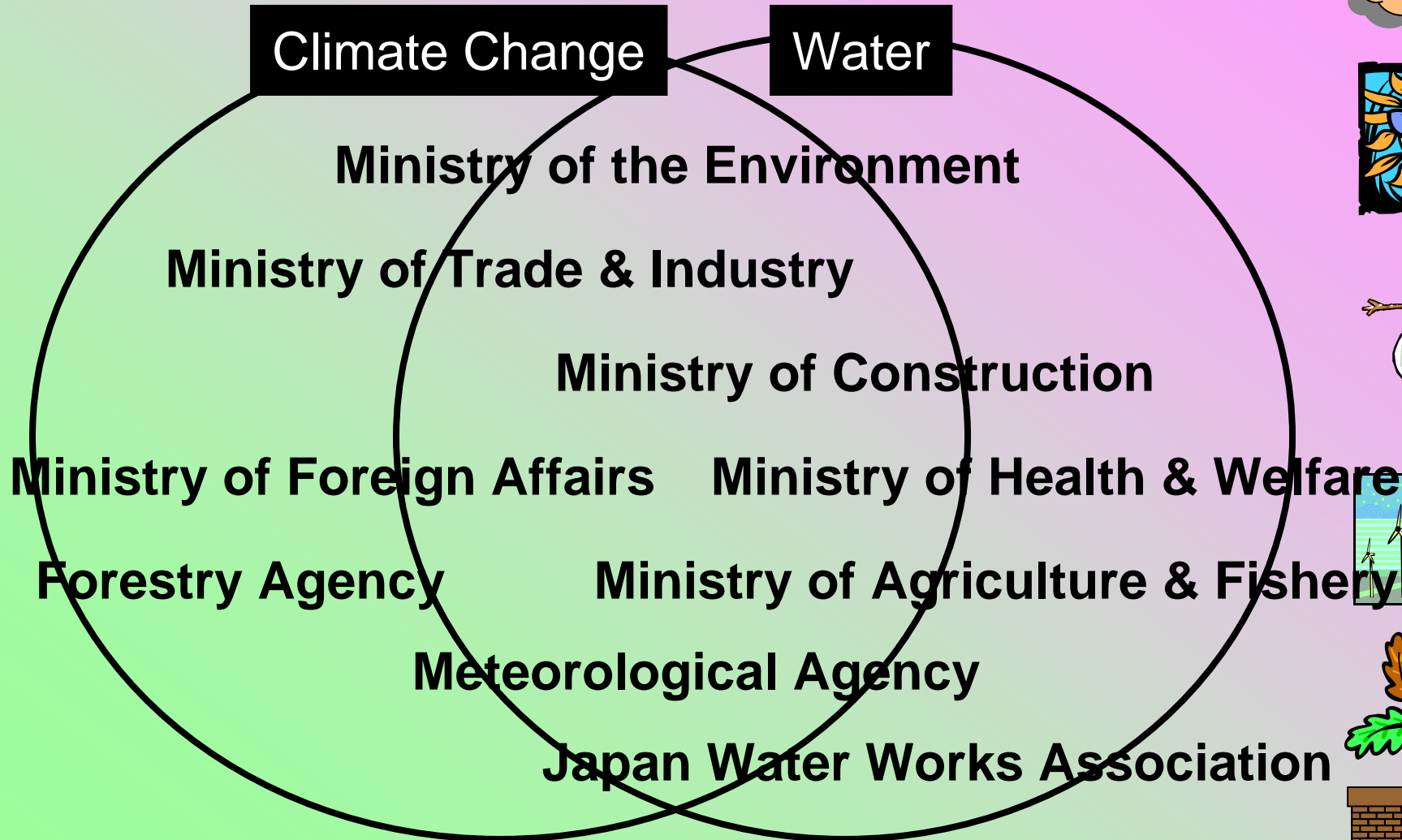
- Team Minus 6%
 - A national movement that encourages the reduction of GHG emission in domestic sector
- **COOLBIZ** campaign
 - A proposal of new business fashion that is comfortable in warm office (28°C)



4月29日 朝刊

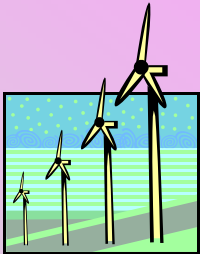
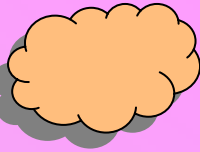


Key Stakeholders for CC and Water Issues



Pacific Context of CC

- Mitigation
 - Renewable energy including mini-hydropower generation
 - Reforestation
 - Improvement of dump site (CH_4 removal)
- Adaptation
 - Coastal erosion (sea wall erection)
 - Salt water intrusion (salt tolerant crops)
 - Frequent cyclone (early warning network)



Suggestion

- “Water” is everybody’s business – involvement strategy
- Emphasis on Climate Change mitigation for industrialized countries and adaptation for small island countries
- Strengthening public-private partnership

