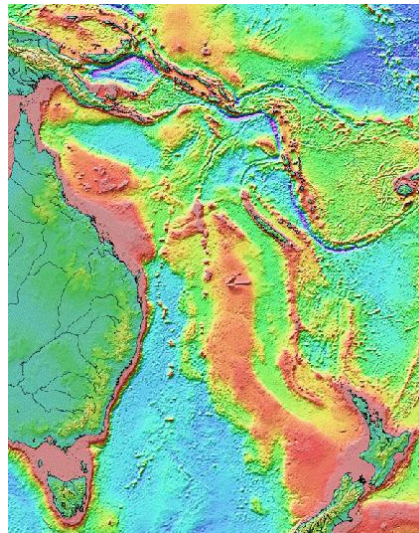


# Integrated Management of New Caledonia's maritime area



## The **Coral Sea MPA Project**



**Yves LAFOY (PhD)**

Official Representative of New Caledonia to New Zealand

Embassy of France

P.O. Box 11343

Wellington 6142

Email: [yves.lafoy@diplomatie.gouv.fr](mailto:yves.lafoy@diplomatie.gouv.fr)

# Regional Context

---

- The Pacific Oceanscape concept: endorsed by the Pacific Island Forum Leaders in 2009: a framework for implementing the Pacific Islands Regional Oceans Policy in strengthening leadership, pride, learning and co-operation amongst the PICTs
- 43rd Pacific Island Forum Summit (Rarotonga, August 2012):  
New Caledonia's own contribution by establishing the Coral Sea Marine Protected Area (Micronesia Challenge, Phoenix Is., CI )

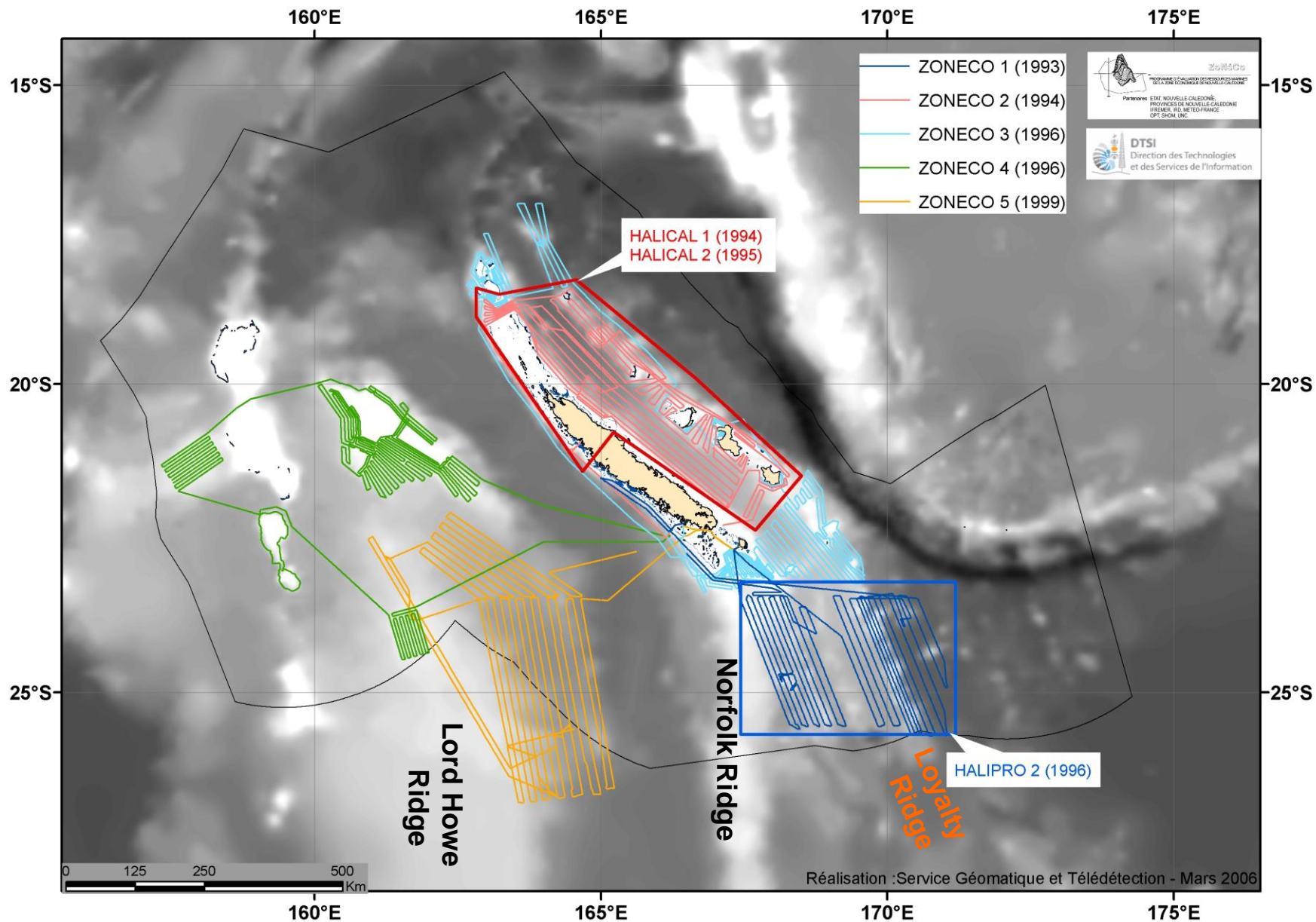
# Regional Context

---

- The Coral Sea Marine Protected Area:

A large-scale MPA project that builds on:

- the multidisciplinary ZoNéCo programme (1991-ongoing) outputs & outcomes;
- the SoI on the Sustainable Management of the Coral Sea, signed by France, New Caledonia and Australia in March, 2010;
- the parts of New Caledonia's lagoons, reefs and mangroves registered in July, 2008 on the UNESCO World Heritage list

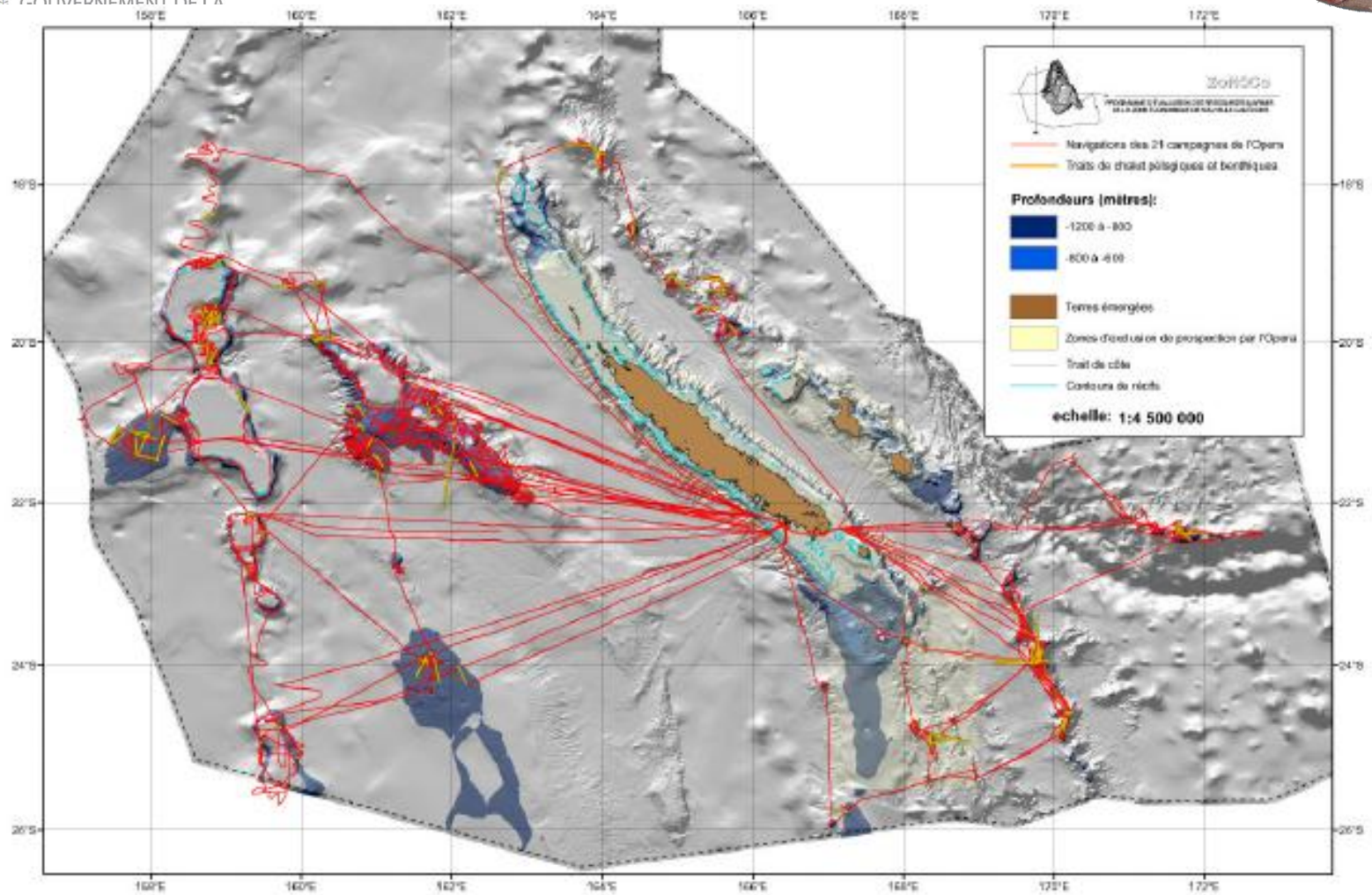




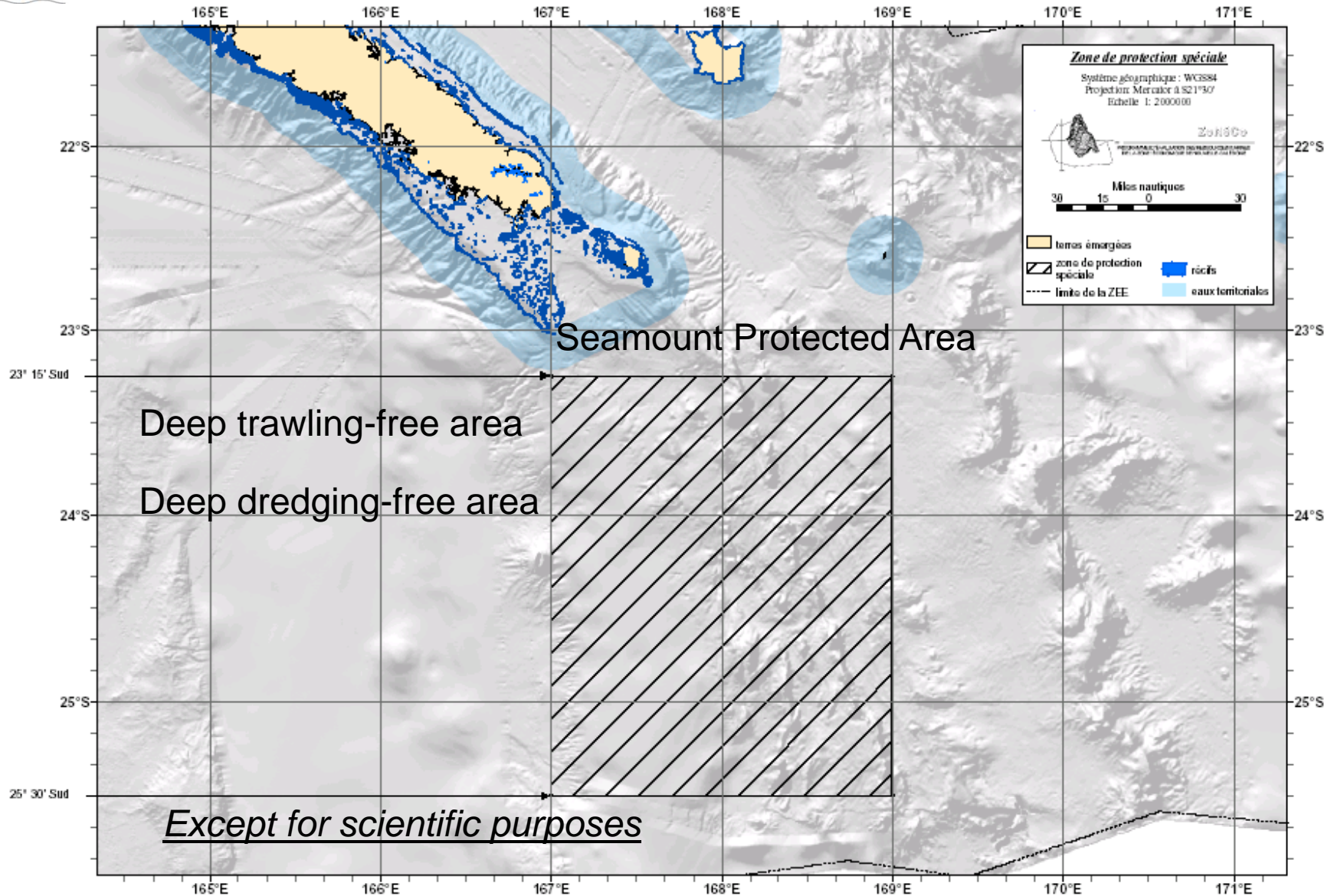
# From Habitat Mapping to Commercial deep fish Stock assessment



GOUVERNEMENT DE LA



# MPAs Approach: a Moratorium on dredging & trawling+Whale Sanctuary

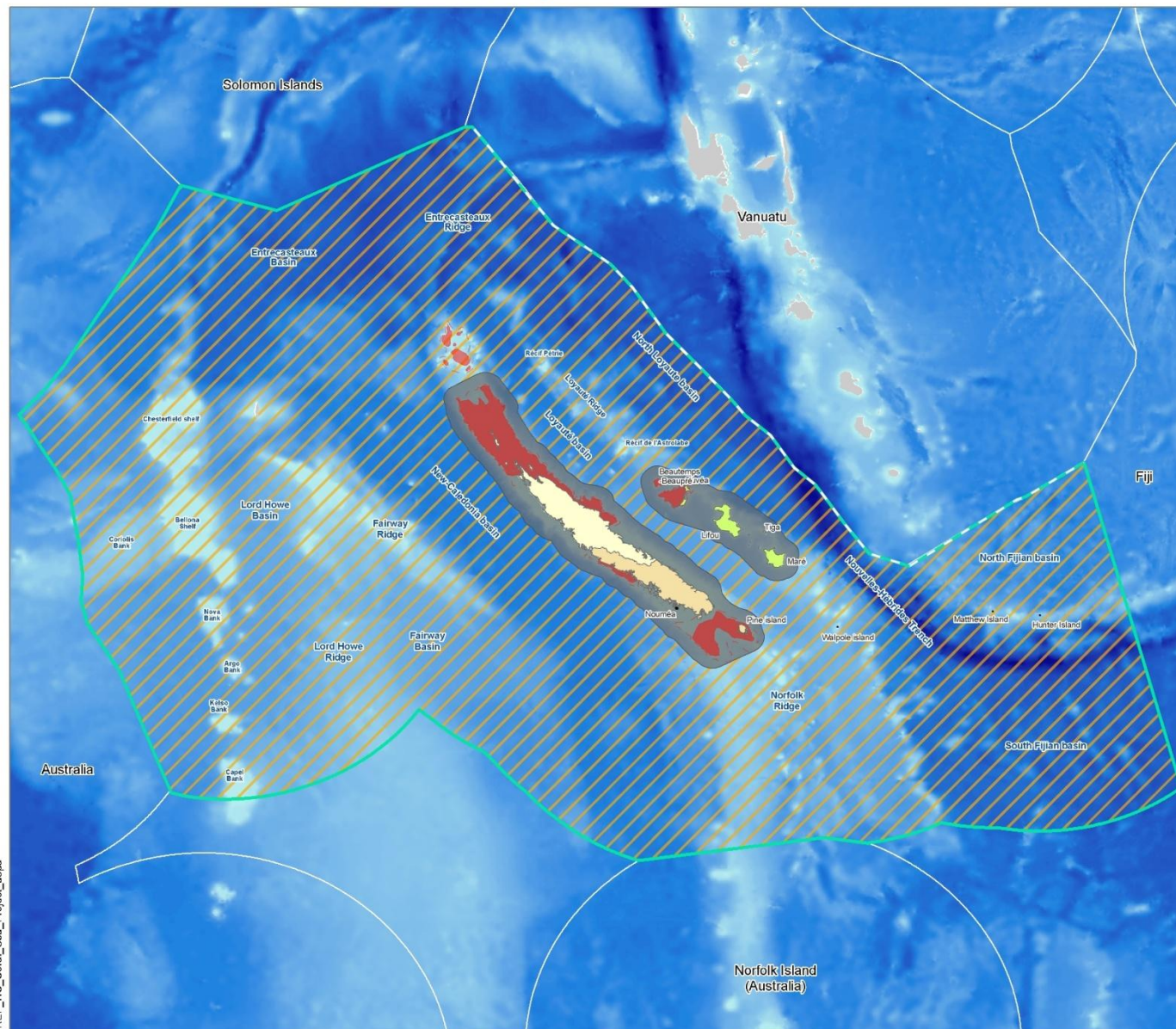







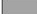

# Project's Biogeographic framework

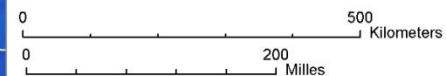
---

- A 1.4 million sq.km study area
- Vasts, pristine coral reef ecosystems hosting a high biodiversity
- High heritage value of Deep Benthic Ecosystems – cold coral reefs and prehistoric faunas (« *Jurassic Park* »)
- Wide Pelagic Ecosystems sustainably exploited by local longline fishery
- No current Petroleum exploration





-  EEZ of New-Caledonia managed by government
-  Coral Sea MPA study area
-  UNESCO World Heritage Site
-  Interior and territorial waters managed by provinces
-  North province
-  South province
-  Loyauté islands province



Data sources :  
- Millennium Coral Reef Mapping Project, IRD-U227/NASA/USF-Imars  
- [www.georep.nc](http://www.georep.nc)  
- GEBCO  
- VLIZ  
Coordinate system : WGS84





# Large-scale MPA's Policy objectives

---

- Participating in National / International initiatives to build an MPA network to ensure an Ecosystem-based management (Rio, 1992–CBD)
- Contributing to the sustainable management of the Coral Sea, in a joint effort with Australia
- Establishing governance & Marine Spatial planning to:
  - ensure a source of richness &
  - New Caledonia's sustainable development :  
3rd nickel producer-2<sup>nd</sup> lagoon (1,600 km;24,000 sq km)

# Surveillance: Issues / Measures

- Remote surveillance of a vast area: numerous EEZ areas located >150NM away from Port / Airport (>400 NM in the western part)
- Fisheries control Policy enforced by the National Navy through dedicated boats and planes
  - New Technologies (HR satellites): to enhance efficiency of remote surveillance at sea
  - An increased joint cooperation with Australia: *FR/NC-AUS SoI (March,2010) on Sust. Mgt of the Coral Sea*

# Other challenges

- Seek necessary resources to update knowledge of Deep sea environments
- Assessment of Natural Heritage vs Resource use < *ad hoc* Management option
- Create and Implement Management Action & Remote Surveillance Plans (AUS)
- Implement wide range Ecosystems monitoring networks
- Integrating traditionnal knowledge and views into a joint NC-AUS Mgt AP ?





**Thank you  
Kia Ora  
Merci  
Oletti**