

# ENVIRONMENTAL SUSTAINABILITY IN URBAN CENTERS

## Session 1

Environmental Challenges in Urban Development

**The development of joint expertise to favor the  
development of low carbon cities**

Yves Cousquer,

Senior Advisor to the French Minister  
for Sustainable development

# For sustainable development

- When elected in 2007, the President Nicolas Sarkozy has made a pledge to the French people to put sustainable development at the heart of his policies.
- A brand new Ministry for Environment and Sustainable Development was established...
- Jean-Louis Borloo, then the only State Minister in the government, had the power and the means of action to fulfill the presidential commitment.
- Nathalie Kosciusko-Morizet has succeeded him last November, with almost the same power and means



# The Minister's responsibilities cover 5 main areas

- Climate change and energy policy
- Transport, modal transfers and infrastructure
- Biodiversity and natural resources
- Sustainable national plans
- Natural, technological and health prevention

# “Grenelle” Process for Environment

From national bargain in 2007

to “Grenelle” Laws I & II in 2008-2010



- The State and local authorities will invest massively in :
  - Urban transport, buses, trams, bicycles...
  - 2000 km of new high-speed railway
  - Railways dedicated to freight
  - Fluvial « highways »
  - Ports
- Ecological taxes, to finance measures decided during the « Grenelle » national meeting.
- State has to lead the way, with its cars and buildings
- Cities will have to contribute to sustainable development

## For a Global « Grenelle » Meeting...

France proposed this « Green New Deal » :

1. into European environmental policies with the help of the European Commission and Parliament - and it turned in the “Three 20s” EU Goals, end of 2008
2. At an international level, which is the main way, but not easy, to manage global public goods such as energy and climate – as Kyoto 2002, Copenhagen 2009 and Cancun 2010 or Durban 2011 have demonstrated
3. And through bilateral cooperation, as with China.

# A Strategic Global Partnership between France and China

Ecology, sustainable development and planning are at the core of this partnership

- Active bilateral cooperation pre-existed:
  - Mass transportation and intelligent transport systems (ITS),
  - Energy efficiency in both the transport and housing industries,
  - Nuclear energy,
  - Mitigating air and water pollution.
- New emphasis on sustainable mobility & urban development since 2007
  - **Joint declaration about Climate Change** issued in Beijing in Nov 2007 by presidents Hu Jintao & Sarkozy, during his first State Visit to China
  - **Cooperation Agreement for sustainable urban development (DUD)**, signed by the two ministers of Construction in China and for Sustainable Development in France, under the umbrella of the Climate Joint declaration.

# The development of joint expertise to favor the development of low carbon cities

## The Sino-French DUD cooperation agreement

DUD Cooperation Agreement asked for **Pilot-sites to be selected** in order to

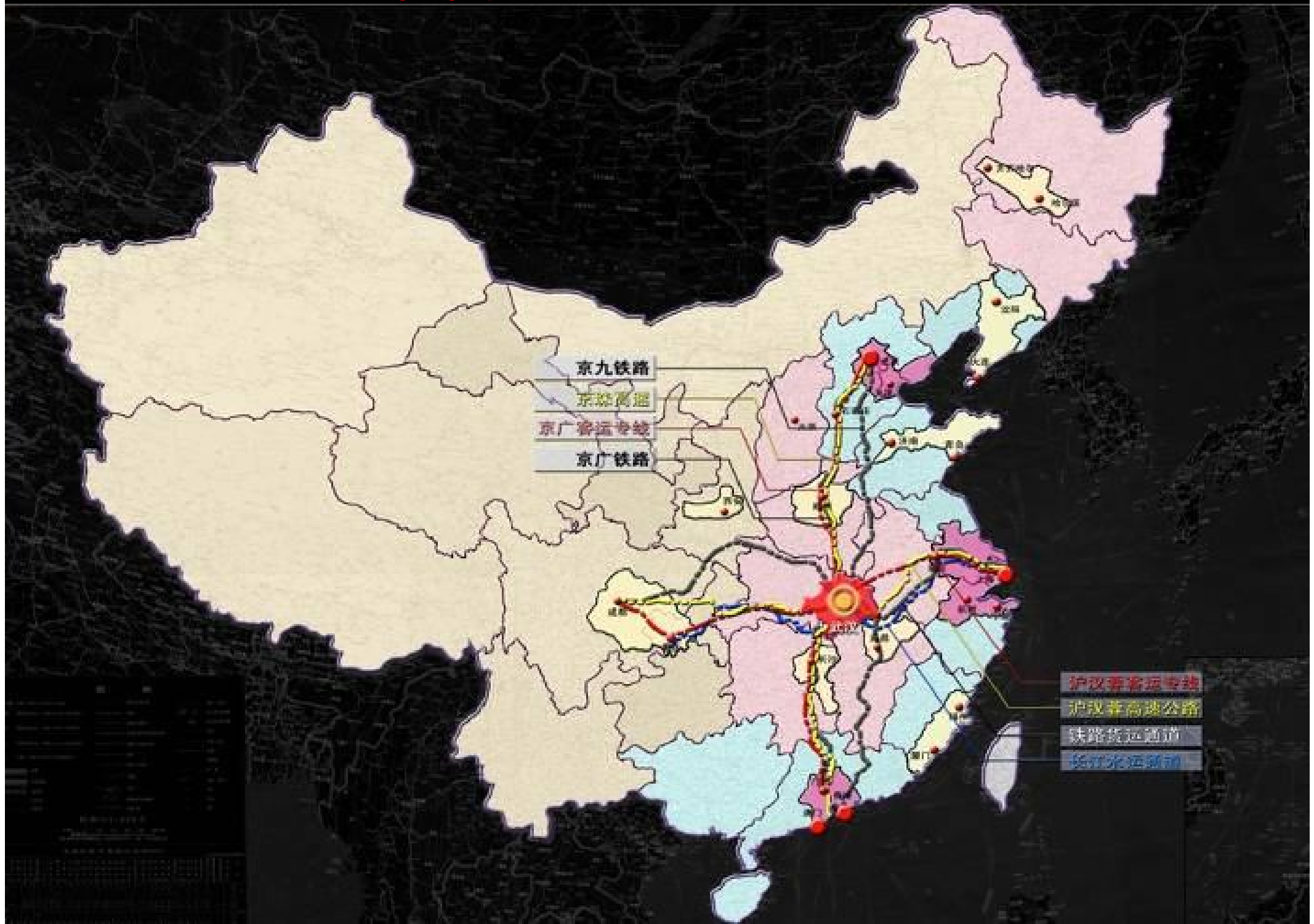
- i. **Learn**, each from the other, **by doing** together on given territories,
- ii. Plan and work together to **pave a bit of the Road** to the Future

- Several sites were proposed by the Chinese part in 2008 , then visited and evaluated by the French part
- High level study trips for Chinese were organized in France in 2009 -2010, as well as three months training courses for urban planners.

➤ **Great Wuhan was nominated early 2010 as pilot site** of DUD Agreement for two main reasons :

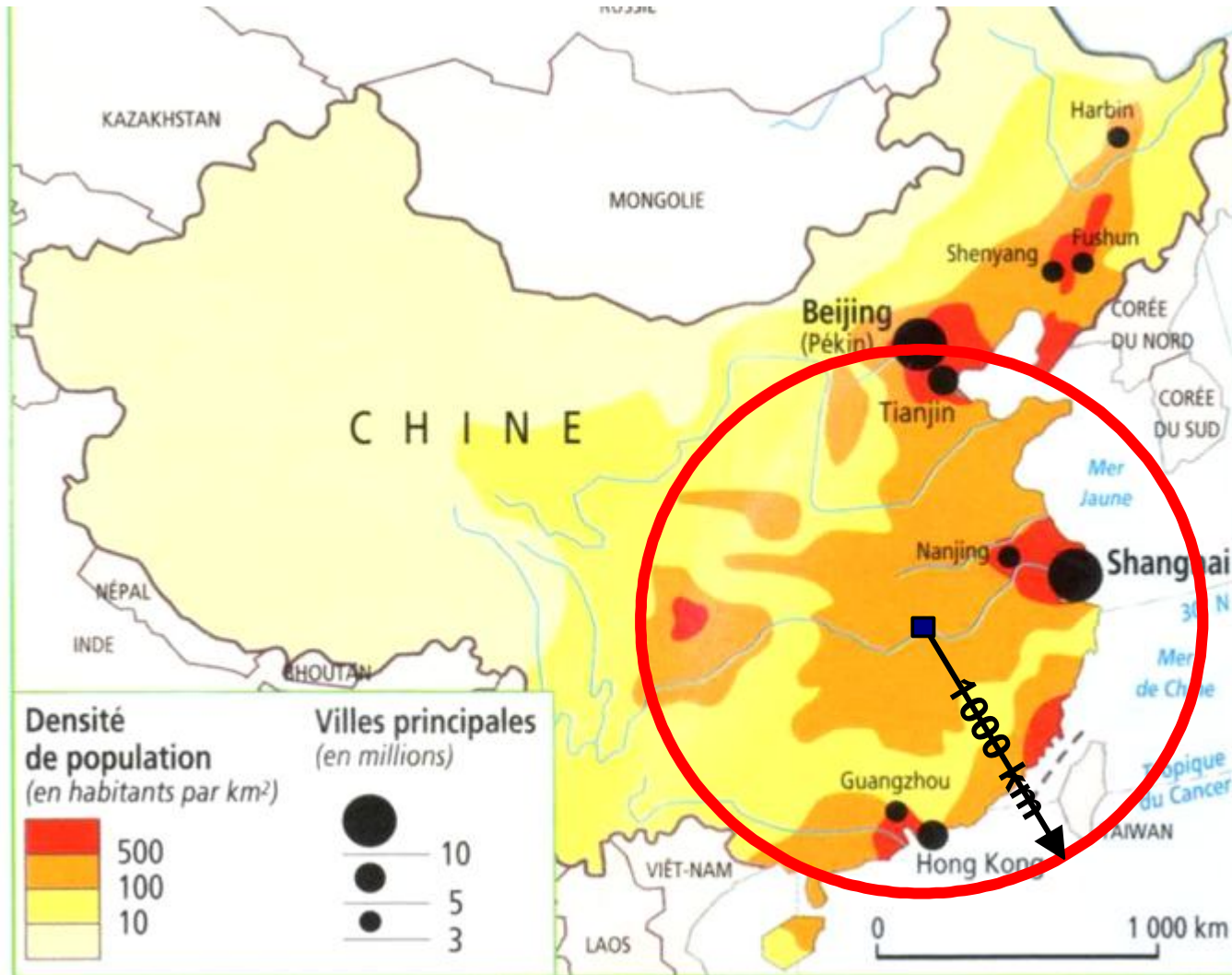
- a) The **Chinese State Council** had chosen in 2008 **Wuhan 8+1** as one of two metropolises to be pilot for the new **Chinese policy of "Two Orientations Society "** – aiming at harmony through energy saving development and natural resources preservation
- b) **Hubei authorities** had volunteered for DUD nomination, as first vice-governor Li Xiansheng was well aware of French urban policies ( through former cooperation agreement between Wuhan and Bordeaux) and was inspired by the way the Grand Paris international project was conducted and performed in 2008-2009

◆交通区位优势：a nice geographic situation



# The development of joint expertise to favor the development of low carbon cities

## The Sino-French cooperation agreement



### ◆ 交通区位优势 :

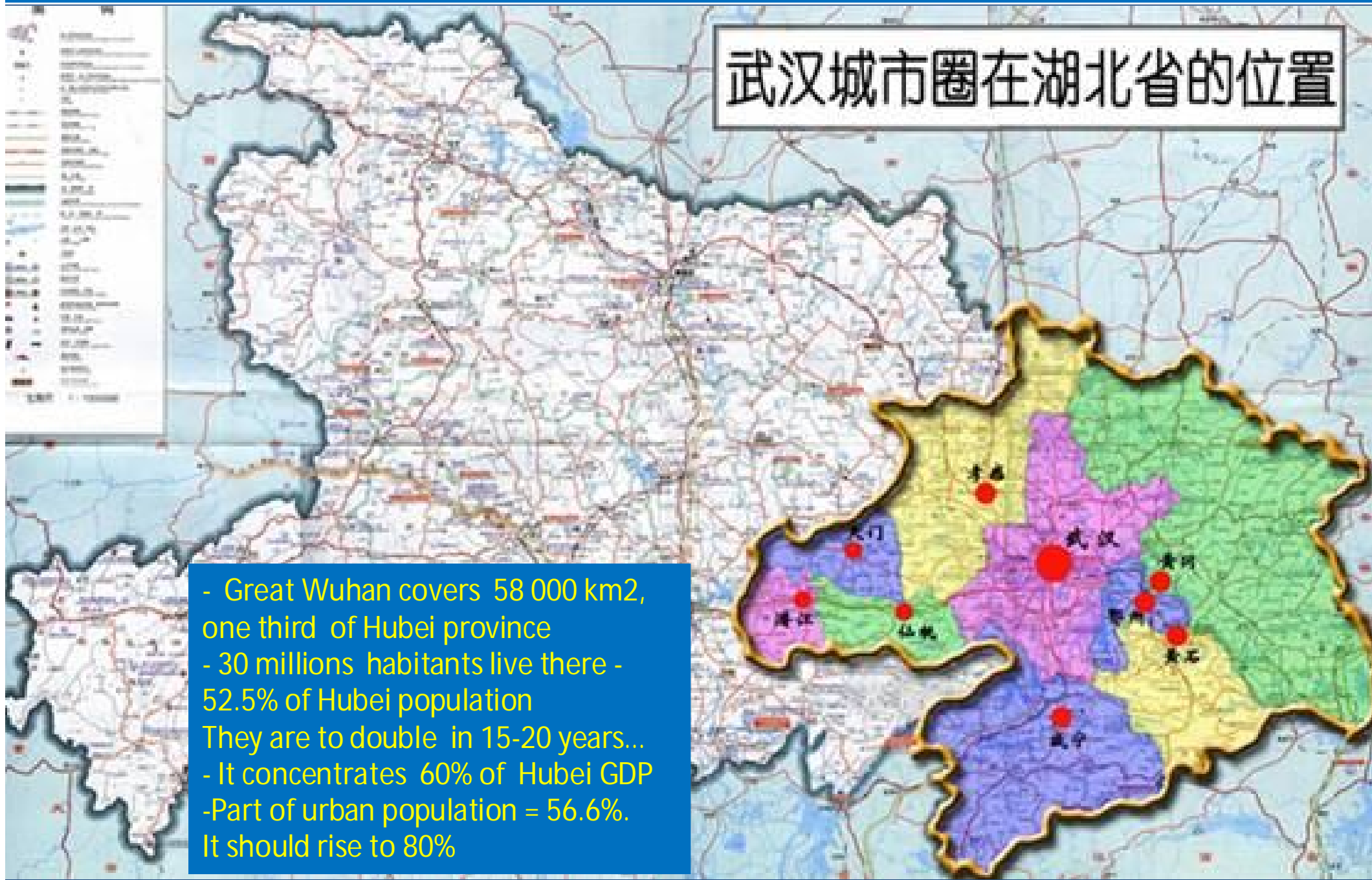
A superb geographic situation.

- Wuhan, 9 M hab, is central for communications in China.
- Wuhan is to be connected by very high speed trains to Beijing in 3 to 4 hours, as it is today to Shanghai or Guangdong, or as it will be to Chengdu.
- Its ports on Yangtse River and its airport have an international vocation.

武汉城市圈国土面积约5.80万平方公里。据统计，2007年常住人口2987.65万人，占全省的52.5%；按“城市人口规模预测规程”测算城镇化水平为56.6%；各项主要经济指标一般占全省60%左右。是湖北经济和人口最为密集的地区。

## 武汉城市圈在湖北省的位置

- Great Wuhan covers 58 000 km<sup>2</sup>, one third of Hubei province
- 30 millions habitants live there - 52.5% of Hubei population
- They are to double in 15-20 years...
- It concentrates 60% of Hubei GDP
- Part of urban population = 56.6%. It should rise to 80%

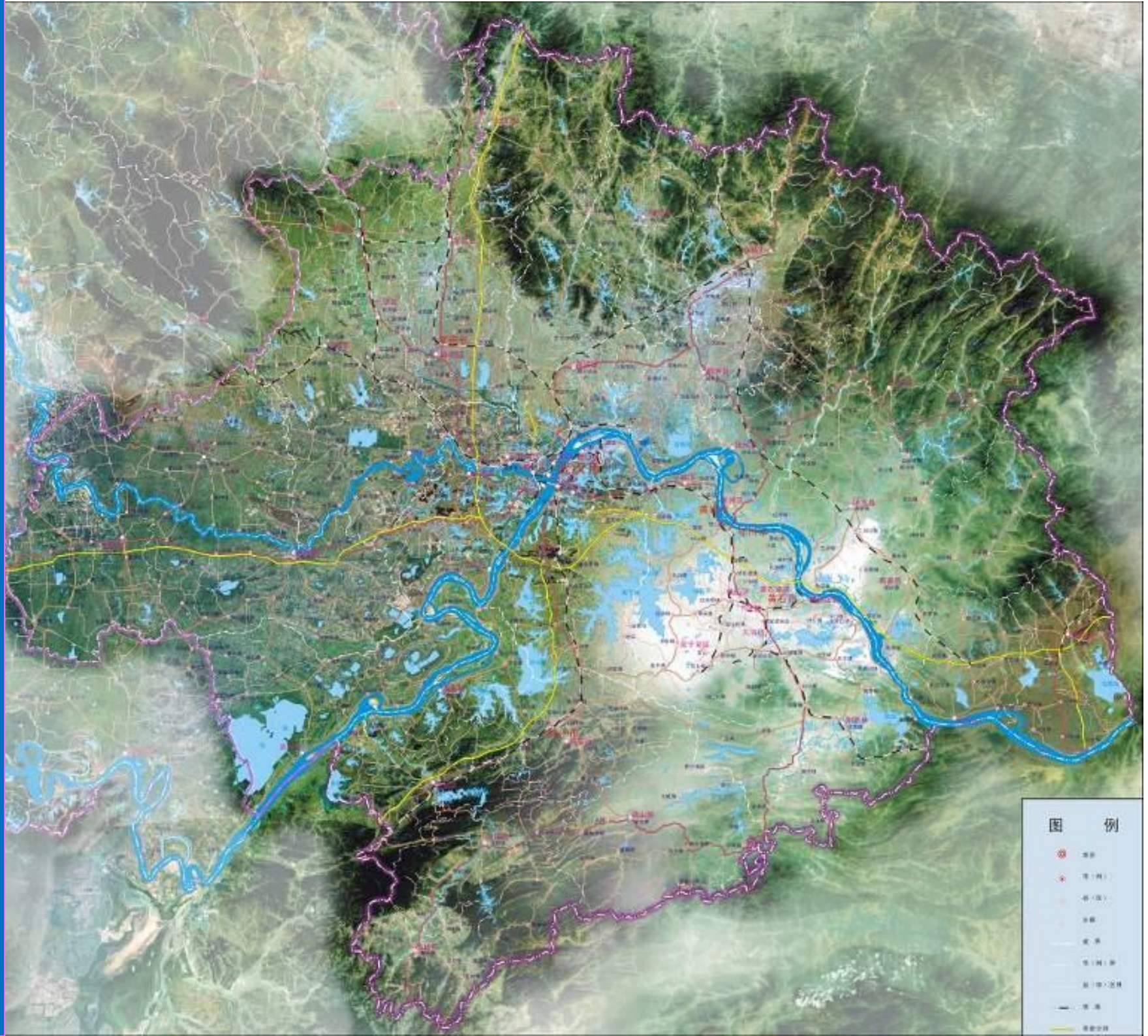


Satellite view  
of Great  
Wuhan area

“The one  
thousand  
lakes”  
territory

Surrounded  
by mountains  
on its North  
and South  
borders

The Yangtse  
River –the  
Blue River -  
flows  
through  
Great Wuhan  
area, as its  
Han River  
affluent



图例

- 城市
- 镇
- 乡
- 村
- 公路
- 铁路
- 河流
- 湖泊
- 水库
- 其他

# Liangzi Lake Planning

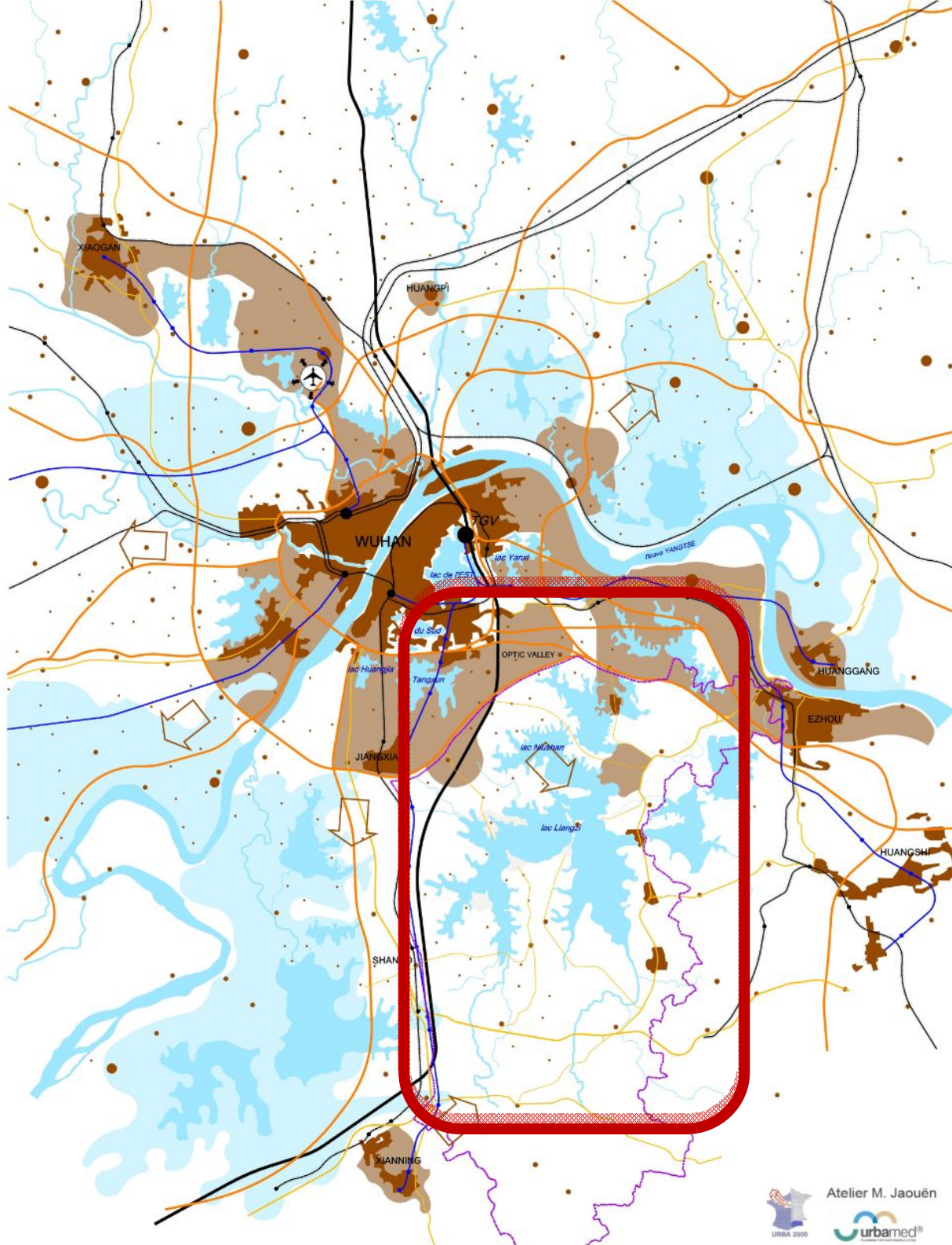
The three times of 2010 cooperation

**1. Preliminary expertise and diagnosis**, to finalize the scope of works of a joint planning session

**2. DUD Planning Workshop:** coproduction in 3 teams, mixing and confronting competences & cultures, in 2 weeks of intense work and brain storm to speed creation & innovations. Vital to keep with the Chinese growth rate and bring an added value to their decision process.

**3. Recommendations** and projects guidelines: time to mature ideas, and decisions related to:

- a) Liangzi Lake Project
- b) Some other strategic places
- c) Transports and Mobility issues for the Metropolis



# The development of joint expertise to favor the development of low carbon cities

## The “five red lines” of DUD strategy

- **1<sup>st</sup> red line** : **Control CO<sub>2</sub> emissions levels** from fossil non renewable energies, at the scale of Great Wuhan Territory.
- **2<sup>nd</sup> red line** : **Preserve territories and resources** to guarantee necessary food production by agriculture, protect our heritage of natural places and open spaces, and maintain biodiversity.
- **3<sup>rd</sup> red line** : **Aim at quality & harmony in the ways of life** of a society whose 80% will live in cities, highly educated and developed, still striving for social balance and equity, and getting older as well
- **4<sup>th</sup> red line** : **Fulfill quality goals to preserve or restore environment and milieu** : restore “pure water, blue air, green ground”.
- **5<sup>th</sup> red line** : **Fix ecologic goals for large zones of open nature and provide room to nature within cities.**

# The development of joint expertise to favor the development of low carbon cities

## A “win-win trade off” between partners


### What did we bring in?

- **1<sup>st</sup> place:** 40 years of experience of urban growth in France, after World War II, reconstruction, reindustrialization, new towns, road , rail or airport networks, RER and TGV, Hydraulic & Nuclear plants; urban crisis and urban sprawl; 20 years to decentralize from State to Regions, counties and cities; a strong tradition of building and running Public networks... and central planning.
- **2<sup>nd</sup> place:** **Modesty** in front of Chinese scale problems

**The trade off** stays in the test that this regional pilot site provides: it’s a test of our joint ability **to understand the global CO<sub>2</sub> challenge and deal with it at a local level** by invention-adaptation of tools and processes to “plug” on real urban projects.

### What did Chinese bring in?

- **1<sup>st</sup> place:** 20 years of impressive **transformation** of the largest country in the World in its main factory. During this period they did what we did over a century! Crisis we knew in a row of decades are telescoping here in one decade...
- **2<sup>nd</sup> place:** **Speed to decide** to deal with their investments & actions, or mistakes as well.  
*When you grow > 10%/year you decide 4 or 5 times faster than we do!*
- **3<sup>rd</sup> place:** **Curiosity** for others’ experiences. As China now deals with quite every country it is building a **world benchmark** .

A serene landscape photograph of a calm lake or river. The water is still, reflecting the light. In the background, a dense line of trees is visible, partially obscured by a soft mist or fog. The foreground is framed by dark, silhouetted leaves of trees, likely maple, which are slightly out of focus. The overall atmosphere is quiet and peaceful.

**Thank you for your attention**